

An update on our people and services.



WELLINGTON NEWS

August 2019

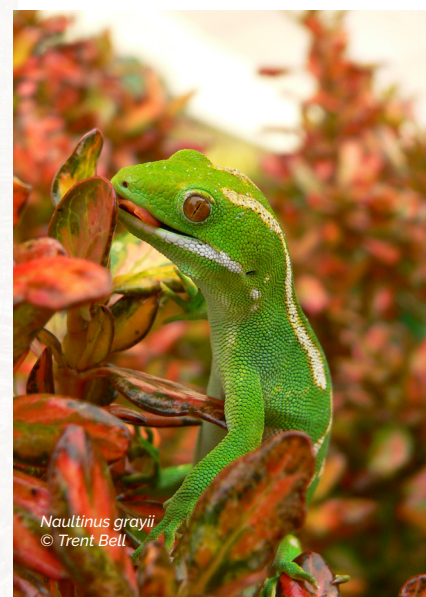
New staff members

Alex Reid, Ecologist

Alex is new to the Wellington team and specialises in freshwater and marine science. Alex is currently working on a wide variety of projects including: delineation of wetland boundaries, assessing potential environmental effects on freshwater ecosystems, and mapping of marine benthic habitats in Pelorus Sound. Alex has worked as an environmental technician, a scientist/planner for Gisborne District Council, and recently undertook research on a coral reef in Cambodia. At Wildlands Alex will be undertaking work on a wide range of aquatic and terrestrial projects.

Trent Bell, Herpetologist

Wildlands are very pleased to announce that Trent Bell, an expert herpetologist, has joined the Wildlands team. Trent was the owner and principal herpetologist of EcoGecko Consultants for the last 10 years, and prior to that he was at Manaaki Whenua Landcare Research. Trent will be based in our Wellington office, but will work across the country on all things to do with lizards, including new species. If you think there may be lizards at a site proposed for development, or if you want to know if there are lizards on your property, the Wildlands herpetology team led by Trent is here to help.



Naultinus grayii
© Trent Bell

King Shag pilot study, Marlborough Sounds



KING SHAGS have a conservation status of Threatened-Nationally Endangered. All of the king shags in the world, about 800 in total, live in small colonies in the Marlborough Sounds such as the one in the photograph (left). There are about 600 mussel farms in the Sounds and also a number of salmon farms. Not a lot is known about how king shags interact with these farms, so Wildlands' Wellington ornithologist Rachel McClellan is leading a team to undertake a pilot study to find out more.



Wellington people



Astrid van Meeuwen Dijkgraaf — Senior Ecologist PhD Ecology

A highly experienced ecologist involved with large projects such as subdivision and infrastructure consent applications; and monitoring and inventory. Strong project management skills make Astrid the ideal person to oversee projects while her technical skills and experience means that she can identify and initiate appropriate investigations and solutions for your projects.

SPECIALIST SKILLS:

Survey and monitoring and expert witness at Hearings (birds, bats, lizards, ecology, biodiversity offsets), design of monitoring programmes and data analysis, plant-fauna interactions and management.

Rachel McClellan — Principal Avifauna Ecologist PhD Zoology

A very experienced ecologist and expert ornithologist who has worked on a wide variety of projects including strategic and conservation plans for large-scale restoration programmes, environmental impact assessments for mines, hydroelectric proposals, subdivisions, and wind farms, and the evaluation of threatened bird management programmes.

SPECIALIST SKILLS:

Design, implementation and review of fauna monitoring programmes, expert witness at Hearings (seabirds, shorebirds, forest birds, wetland birds), expert ornithological advice, writing and review of environmental impact assessments.



Trent Bell — Senior Ecologist Herpetology BSc Ecology, CEnvP

A highly experienced researcher and practitioner in the field of herpetology (lizards). Trent is an expert at undertaking surveys, preparing environmental impact reports and management planning, and implementing monitoring programmes for the lizard component of projects, including subdivisions, roads, mines, and wind farms.

SPECIALIST SKILLS:

Design, implementation and reporting lizard surveys, salvage and monitoring programmes.



Frances Forsyth — Senior Ecologist MSc Ecology

An environmental scientist and ecologist with experience on a wide variety of projects, particularly those involving freshwater fish. Frances has a reputation for well-researched, thoughtful and practical work with well-written clear reports.

SPECIALIST SKILLS:

Ecological restoration, ecological management plans, expert witness at Hearings, freshwater fish, and stream management. SEV and electric-fishing qualified.



Keely Paler — Ecologist MSc Biosecurity and Conservation

An ecologist with experience in ecological assessments focussed on a range of vegetation and habitat types, and species, including invertebrates, plants, and pest plants. Keely is an integral part of projects with a large field work or data compilation component, such as assessments of potential Significant Natural Areas (SNAs), assessments for Forest Stewardship Council certification, and vegetation and weed mapping.



Alex Reid — Ecologist MMarCon Marine Conservation

An environmental scientist with expertise in the monitoring and assessment of freshwater and marine ecosystems. He is experienced in investigating land use effects on aquatic environments, including for coastal developments, landfills, bridges and river bank protections, and has expertise in resource consenting.

SPECIALIST SKILLS:

Assessments of land use effects, surface and groundwater quality monitoring and assessment, and freshwater and marine fish and invertebrates.



FISH PASSAGE ASSESSMENT APP AND PERMITS

Fish passage can now be assessed using NIWA's Fish Passage Assessment Tool, which is available free online. If you are planning a new structure in a river or stream it must comply with the New Zealand Fish Passage Guidelines which are also available online. Should your existing structure or ford be found to be impeding fish passage in some way this must be remedied or a permit must be obtained from DOC allowing the structure to remain as is. Wildlands can help you with fish passage assessment, removal of barriers to fish passage, and with remedies for impeded passage, as well as with permit applications. It saves time and money to sort these things out before you apply for a resource consent.

niwa.co.nz

fishpassage.niwa.co.nz



NIWA's Fish Passage Assessment Smart Phone App

